



Plan 1

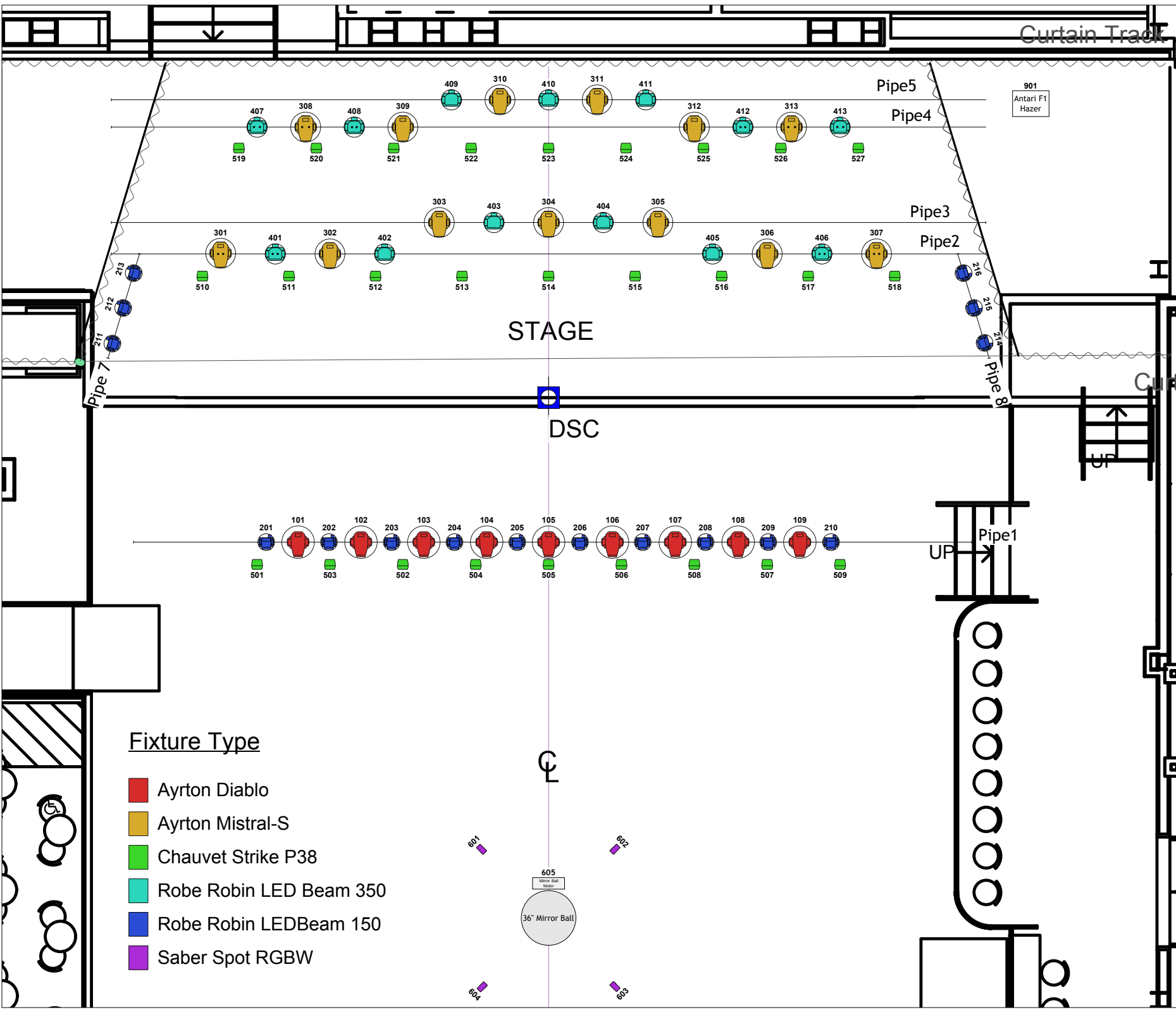
Lighting Legend

	Quantity: 1 Instrument Type: Ayrton Diablo Model: Extreme DMX Footprint: 56 Weight: 48.00 lb
	Quantity: 16 Instrument Type: Robe Robin LEDBeam Model: Model 1 DMX Footprint: 22 Weight: 12.69 lb
	Quantity: 11 Instrument Type: Ayrton Mistral-S Model: Extreme DMX Footprint: 20 Weight: 41.70 lb
	Quantity: 13 Instrument Type: Robe Robin LED Model: Model 130 DMX Footprint: 24 Weight: 4.00 lb
	Quantity: 27 Instrument Type: Chauvet Strike P38 Model: 4 Channel DMX Footprint: 18 Weight: 8.40 lb
	Quantity: 4 Instrument Type: Saber Spot RGBW Model: 7 Channel DMX Footprint: 12 Weight: 1.40 lb

Rev: _____ Date: MARCH 2023

Stage Lighting

Designer: Andrew Smith
Drawn By: Walker Howell
Design Firm: Pulse Lighting
901 Space Park N, Goodlettsville TN 37072



Fixture Type

- Ayrton Diablo
- Ayrton Mistral-S
- Chauvet Strike P38
- Robe Robin LED Beam 350
- Robe Robin LEDBeam 150
- Saber Spot RGBW

605
Mirror Ball
36" Mirror Ball

601

602

604

603

UP → Pipe 1

UP

Pipe 7
211
212
213

Pipe 8
216
215
214

Pipe 5

Pipe 4

Pipe 3

Pipe 2

901
Antari F1
Hazer

STAGE

DSC

CL

407 308 408 309 409 310 410 311 411 312 412 313 413
519 520 521 522 523 524 525 526 527

301 401 302 402 303 403 304 404 305 405 306 406 307
510 511 512 513 514 515 516 517 518

201 101 202 102 203 103 204 104 205 105 206 106 207 107 208 108 209 109 210
501 503 502 504 505 506 508 507 509



PULSE LIGHTING

Treefort Music Hall

Universe

Lighting Legend



Quantity: 6
Instrument Type: Alyton Diablo
Note: Extended
DMX Footprints: 56
Wattage: 355
Weight: 48.00 lb



Quantity: 14
Instrument Type: Robe RobinLEDbeam
Model: Model 1
DMX Footprints: 22
Wattage: 225
Weight: 12.40 lb



Quantity: 17
Instrument Type: Alyton Material 5
Model: Extended
DMX Footprints: 36
Wattage: 355
Weight: 41.70 lb



Quantity: 13
Instrument Type: Robe RobinLED
Model: Model 150
DMX Footprints: 24
Wattage: 465
Weight: 21.70 lb



Quantity: 27
Instrument Type: Alyton Scribe
Model: 4 Channel
DMX Footprints: 6
Wattage: 58
Weight: 8.40 lb



Quantity: 4
Instrument Type: Saber Spot KCMR
Model: 7 Channel
DMX Footprints: 12
Wattage: 14
Weight: 2.60 lb

Rev: Date: MARCH 2023

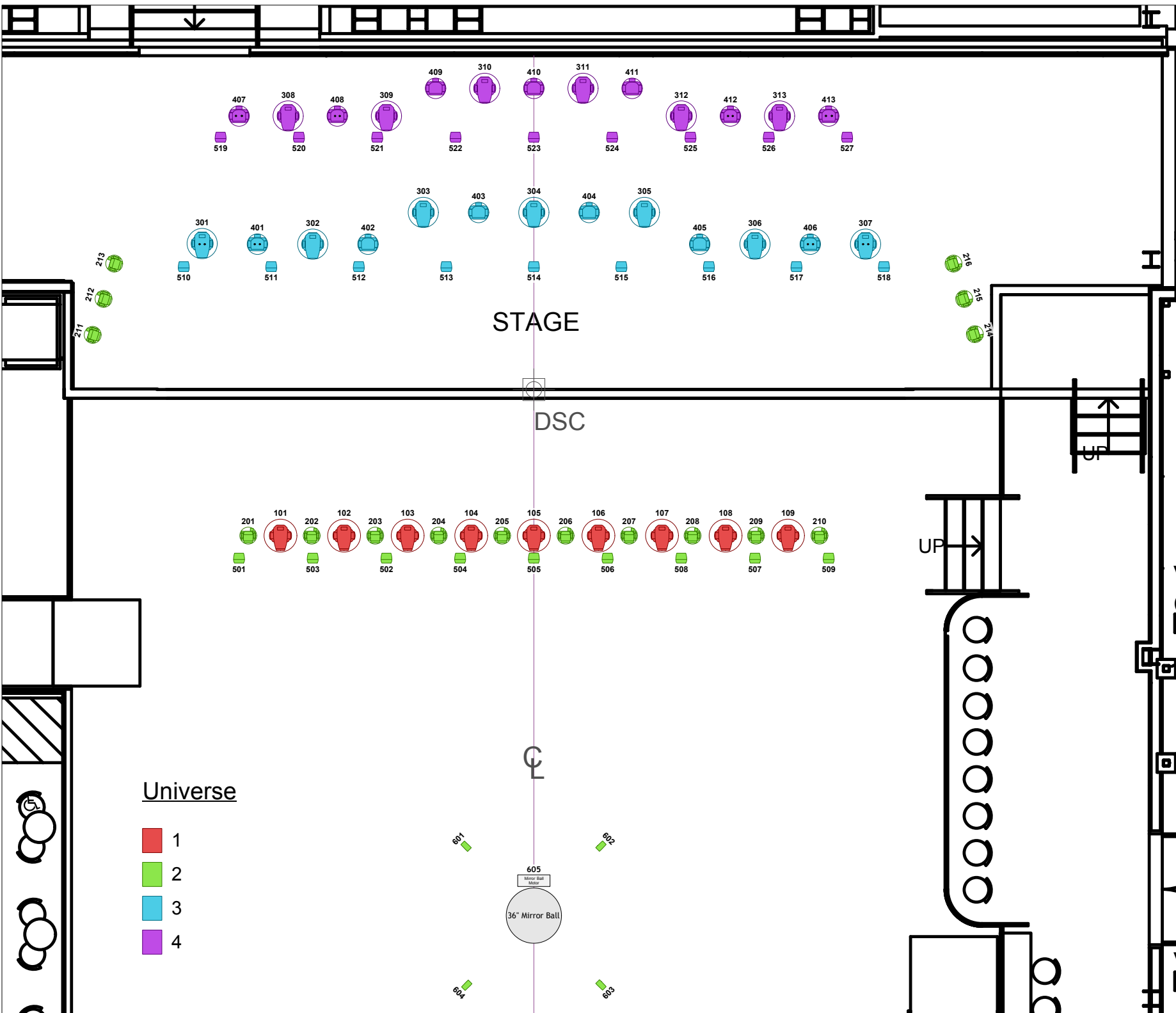
Stage Lighting

Designer: Andrew Smith

Drawn By: Walker Howell

Design Firm: Pulse Lighting

901 Space Park N, Goodlettsville TN 37072



Universe

- 1
- 2
- 3
- 4

36" Mirror Ball

Instrument Schedule

Universe

1 2 3 4

Fixture #	Instrument Type	Mode	DMX Footprint	Universe/Address	Position	Off Center	
101	Ayrton Diabolo	Extended	56	1/1	DS Pipe	-13'9"	
102	Ayrton Diabolo	Extended	56	1/57	DS Pipe	-10'4"	
103	Ayrton Diabolo	Extended	56	1/113	DS Pipe	-6'10"	
104	Ayrton Diabolo	Extended	56	1/169	DS Pipe	-3'5"	
105	Ayrton Diabolo	Extended	56	1/225	DS Pipe	0"	
106	Ayrton Diabolo	Extended	56	1/281	DS Pipe	3'6"	
107	Ayrton Diabolo	Extended	56	1/337	DS Pipe	6'11"	
108	Ayrton Diabolo	Extended	56	1/393	DS Pipe	10'5"	
109	Ayrton Diabolo	Extended	56	1/449	DS Pipe	13'10"	
201	Robe Robin LEDBeam 150	Mode 1	22	2/1	DS Pipe	-15'6"	
202	Robe Robin LEDBeam 150	Mode 1	22	2/23	DS Pipe	-12'1"	
203	Robe Robin LEDBeam 150	Mode 1	22	2/45	DS Pipe	-8'7"	
204	Robe Robin LEDBeam 150	Mode 1	22	2/67	DS Pipe	-5'2"	
205	Robe Robin LEDBeam 150	Mode 1	22	2/89	DS Pipe	-1'9"	
206	Robe Robin LEDBeam 150	Mode 1	22	2/111	DS Pipe	1'9"	
207	Robe Robin LEDBeam 150	Mode 1	22	2/133	DS Pipe	5'2"	
208	Robe Robin LEDBeam 150	Mode 1	22	2/155	DS Pipe	8'7"	
209	Robe Robin LEDBeam 150	Mode 1	22	2/177	DS Pipe	12'1"	
210	Robe Robin LEDBeam 150	Mode 1	22	2/199	DS Pipe	15'6"	
211	Robe Robin LEDBeam 150	Mode 1	22	2/221	SR SIDE Pipe	-23'11"	
212	Robe Robin LEDBeam 150	Mode 1	22	2/243	SR SIDE Pipe	-23'4"	
213	Robe Robin LEDBeam 150	Mode 1	22	2/265	SR SIDE Pipe	-22'9"	
214	Robe Robin LEDBeam 150	Mode 1	22	2/287	SL SIDE Pipe	23'11"	
215	Robe Robin LEDBeam 150	Mode 1	22	2/309	SL SIDE Pipe	23'4"	
216	Robe Robin LEDBeam 150	Mode 1	22	2/331	SL SIDE Pipe	22'9"	
301	Ayrton Mistral-S	Extended	39	3/1	MS Pipe	-18'0"	
302	Ayrton Mistral-S	Extended	39	3/40	MS Pipe	-12'0"	
303	Ayrton Mistral-S	Extended	39	3/79	MS Pipe	-6'0"	
304	Ayrton Mistral-S	Extended	39	3/118	MS Pipe	0"	
305	Ayrton Mistral-S	Extended	39	3/157	MS Pipe	6'0"	
306	Ayrton Mistral-S	Extended	39	3/196	MS Pipe	12'0"	
307	Ayrton Mistral-S	Extended	39	3/235	MS Pipe	18'0"	
308	Ayrton Mistral-S	Extended	39	4/1	US Pipe	-13'4"	
309	Ayrton Mistral-S	Extended	39	4/40	US Pipe	-8'0"	
310	Ayrton Mistral-S	Extended	39	4/79	US Pipe	-2'8"	
311	Ayrton Mistral-S	Extended	39	4/118	US Pipe	2'8"	
312	Ayrton Mistral-S	Extended	39	4/157	US Pipe	8'0"	
313	Ayrton Mistral-S	Extended	39	4/196	US Pipe	13'4"	
401	Robe Robin LED Beam 350	Mode 1	24	3/274	MS Pipe	-15'0"	
402	Robe Robin LED Beam 350	Mode 1	24	3/296	MS Pipe	-9'0"	
403	Robe Robin LED Beam 350	Mode 1	24	3/318	MS Pipe	-3'0"	
404	Robe Robin LED Beam 350	Mode 1	24	3/340	MS Pipe	3'0"	
405	Robe Robin LED Beam 350	Mode 1	24	3/362	MS Pipe	9'0"	
406	Robe Robin LED Beam 350	Mode 1	24	3/384	MS Pipe	15'0"	
407	Robe Robin LED Beam 350	Mode 1	24	4/235	US Pipe	-16'0"	
408	Robe Robin LED Beam 350	Mode 1	24	4/257	US Pipe	-10'8"	
409	Robe Robin LED Beam 350	Mode 1	24	4/279	US Pipe	-5'4"	
410	Robe Robin LED Beam 350	Mode 1	24	4/301	US Pipe	0"	
411	Robe Robin LED Beam 350	Mode 1	24	4/323	US Pipe	5'4"	
412	Robe Robin LED Beam 350	Mode 1	24	4/345	US Pipe	10'8"	
413	Robe Robin LED Beam 350	Mode 1	24	4/367	US Pipe	16'0"	

Fixture #	Instrument Type	Mode	DMX Footprint	Universe/Address	Position	Off Center	
501	Chauvet Strike P38	6 Channel	6	2/353	DS Pipe	-16'0"	
502	Chauvet Strike P38	6 Channel	6	2/359	DS Pipe	-8'0"	
503	Chauvet Strike P38	6 Channel	6	2/365	DS Pipe	-12'0"	
504	Chauvet Strike P38	6 Channel	6	2/371	DS Pipe	-4'0"	
505	Chauvet Strike P38	6 Channel	6	2/377	DS Pipe	0"	
506	Chauvet Strike P38	6 Channel	6	2/383	DS Pipe	4'0"	
507	Chauvet Strike P38	6 Channel	6	2/389	DS Pipe	12'0"	
508	Chauvet Strike P38	6 Channel	6	2/395	DS Pipe	8'0"	
509	Chauvet Strike P38	6 Channel	6	2/401	DS Pipe	16'0"	
510	Chauvet Strike P38	6 Channel	6	3/406	MS Pipe	-19'0"	
511	Chauvet Strike P38	6 Channel	6	3/412	MS Pipe	-14'3"	
512	Chauvet Strike P38	6 Channel	6	3/418	MS Pipe	-9'6"	
513	Chauvet Strike P38	6 Channel	6	3/424	MS Pipe	-4'9"	
514	Chauvet Strike P38	6 Channel	6	3/430	MS Pipe	0"	
515	Chauvet Strike P38	6 Channel	6	3/436	MS Pipe	4'9"	
516	Chauvet Strike P38	6 Channel	6	3/442	MS Pipe	9'6"	
517	Chauvet Strike P38	6 Channel	6	3/448	MS Pipe	14'3"	
518	Chauvet Strike P38	6 Channel	6	3/454	MS Pipe	19'0"	
519	Chauvet Strike P38	6 Channel	6	4/389	MS Pipe	-17'0"	
520	Chauvet Strike P38	6 Channel	6	4/395	US Pipe	-12'9"	
521	Chauvet Strike P38	6 Channel	6	4/401	US Pipe	-8'6"	
522	Chauvet Strike P38	6 Channel	6	4/407	US Pipe	-4'3"	
523	Chauvet Strike P38	6 Channel	6	4/413	US Pipe	0"	
524	Chauvet Strike P38	6 Channel	6	4/419	US Pipe	4'3"	
525	Chauvet Strike P38	6 Channel	6	4/425	US Pipe	8'6"	
526	Chauvet Strike P38	6 Channel	6	4/431	US Pipe	12'9"	
527	Chauvet Strike P38	6 Channel	6	4/437	US Pipe	17'0"	
601	Saber Spot RGBW	7 Channel	7	2/407	FOH	-3'8"	
602	Saber Spot RGBW	7 Channel	7	2/414	FOH	3'8"	
603	Saber Spot RGBW	7 Channel	7	2/421	FOH	3'8"	
604	Saber Spot RGBW	7 Channel	7	2/428	FOH	-3'8"	
605	Mirror Ball Motor	RELAY - ON @ 50%	1	2/435	FOH	0"	
901	Antari F1 Hazer	2 Channel	2	5/501	Floor		





Treefort Music Hall Console and Network Plan

- House Console - GrandMA3 Compact XT
 - Ethercon 1 - sACN 2.0.0.30 / Subnet 255.0.0.0
 - Output - Unicast
 - Priority - 200
 - Ethercon 2 - Freely Assignable
 - Ethercon 3 - Freely Assignable
- Network Switch - Swisson XES-2T6
 - Trunk Ports - Not Used
 - All other Ports - Dedicated sACN
- DMX Node - Swisson XND-8
 - DHCP - Disabled
 - Static IP Address - sACN 2.0.0.40 / Subnet 255.0.0.0

